

1. Intended use.

The PU4/HV (AWZ 626) relay module is to be used in low-voltage installations. It is intended for controlling and status indication in e.g. alarm or access control systems. It may be used to control devices of high power consumption via OC outputs of alarm systems. Moreover, it ensures galvanic isolation of signals, power sources relating to the outputs of the module.

2. Installation.

The module is equipped with a plastic panel with self-adhesive tape that enables fixing it to a flat surface (side panel of an enclosure, a buffer PSU, etc.) and holes for bolting the panel to the mounting surface.

3. Description of the module.

3.1 Components.

1 - input module terminals
2 - LED (indicates relay's operations)
3 - relay
4 - fuse
5 - relay output terminals
6 - mounting board

3.2 Connectors.

-I+ inputs of the voltage that control the relay
NC - normally closed relay's contact
NO - normally open relay's contact
C - common terminal of the relay

4. Specifications.

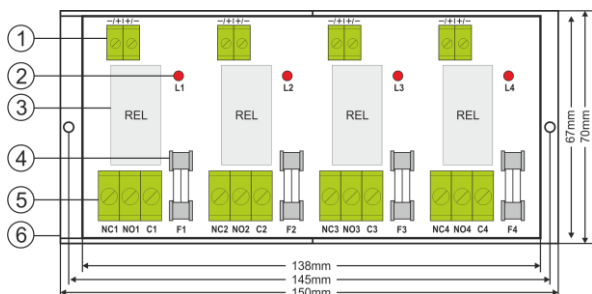
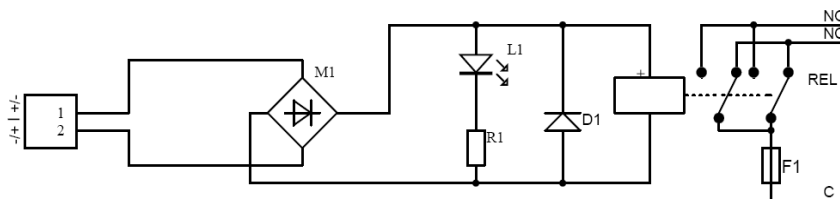


Fig. 1. General view of the module.

Voltage of the relay's coil	10÷16V DC/AC (-/+5%),
Current of the relay's coil	33mA@12VDC
Coil resistance	360 OHM (-/+10%)
Coil power	400mW
Number of relays	4
Voltage of the relay's contacts	30VDC / 250VAC max.
Current of the relay's contacts	6A max.
Contacts of relay	NC/NO/C
ON/OFF time	15ms/8ms (-/+5%)
Operating conditions	2nd environmental class, -10°C÷ 40°C
Enclosure	open-frame design, IP00
Dimensions	L=150, W=70, H=30 [mm, +/-2]
Net/gross weight	0,16 / 0,19 [kg]
Installation	installation tape or installation bolt x2
Declaration, warranty	CE, 2 year from the production date
Notes	Leads on connections: Ø 0,41÷1,63 (AWG 26-14) 0,2 ÷ 1,5mm ² Ø 0,41÷2,59 (AWG 26-10) 0,5 ÷ 4mm ² - relay contacts

5. Electrical diagram



WEEE PARKING

According to the EU WEE Directive – It is required not to dispose of electric or electronic waste as unsorted municipal waste and to collect such WEEE separately.

Pulsar

Siedlec 150, 32-744 Łapczyca, Polska
Tel. (+48) 14-610-19-40, Fax. (+48) 14-610-19-50
e-mail: biuro@pulsar.pl, sales@pulsar.pl
http:// www.pulsar.pl, www.zasilacze.pl